

TIMBER HOUSE

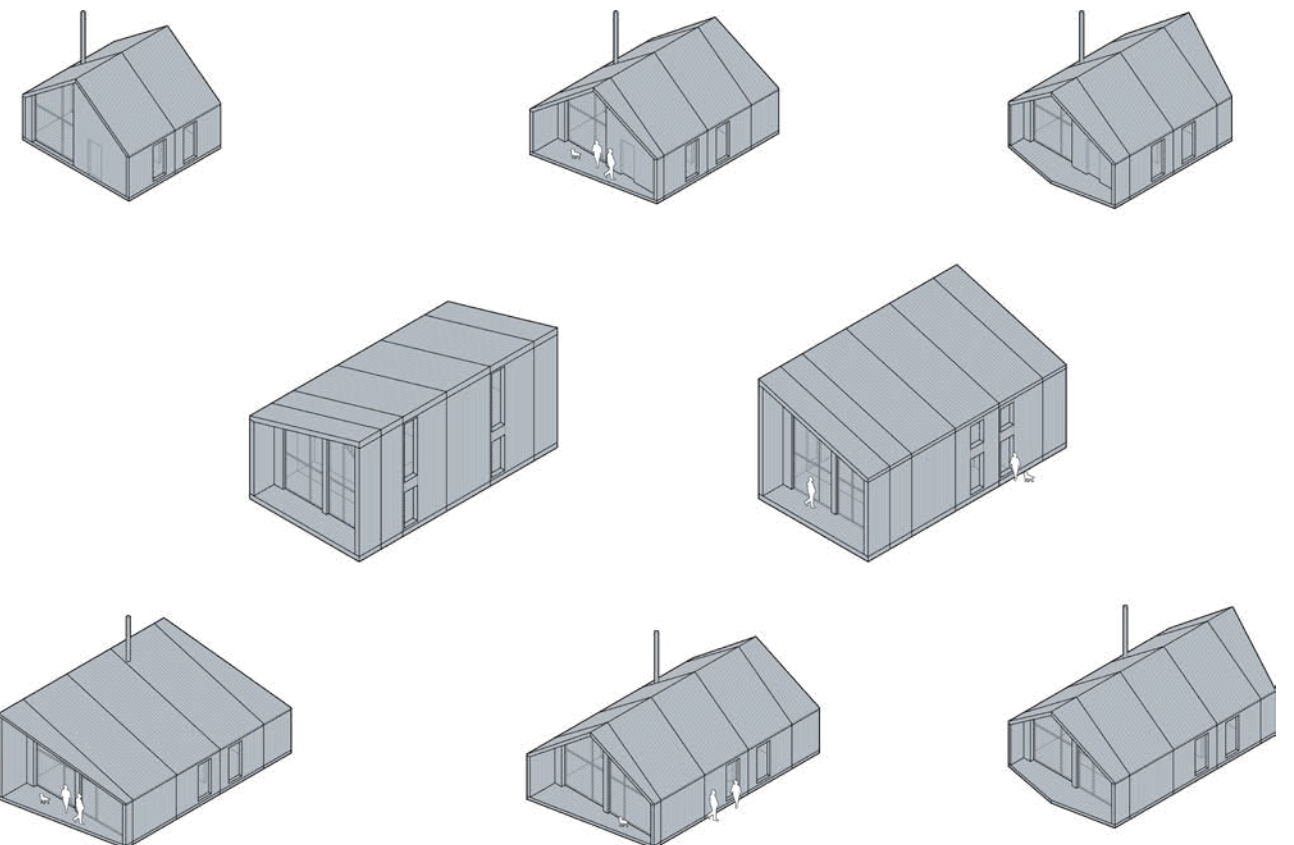
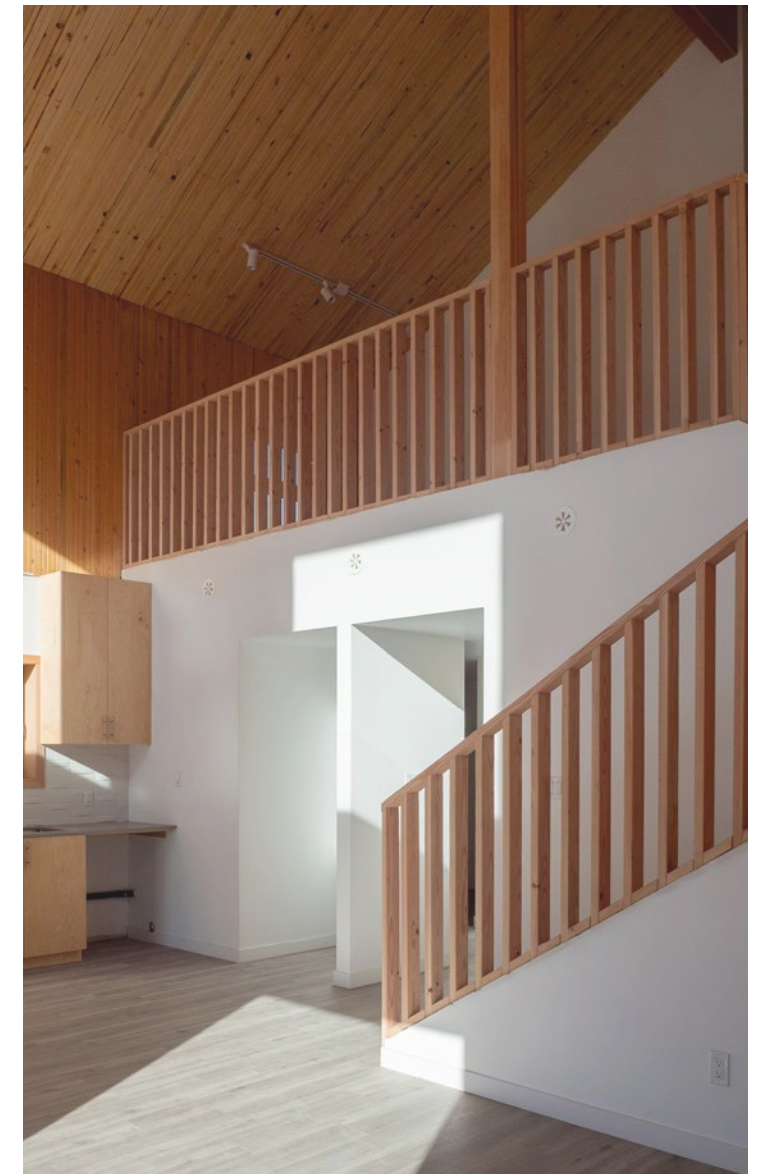
A Mass Timber Housing System for Nak'azdli Whut'en

The Timber House project is not simply a prototype home, but a step toward re-establishing local control over how housing is designed, produced, and delivered.

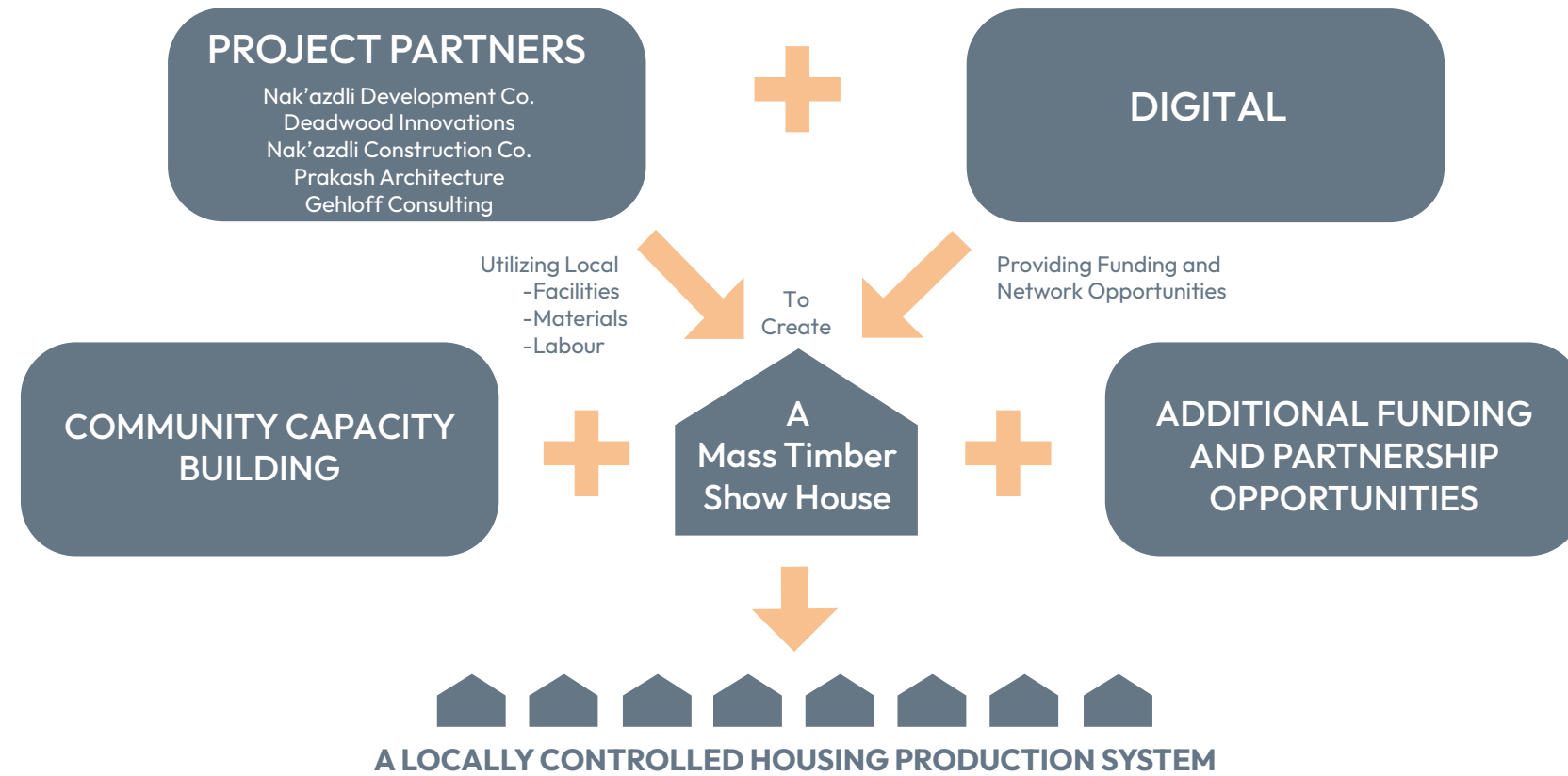
Developed in partnership with Nak'azdli Development Corporation, the project explores a prefabricated Nail-Laminated Timber (NLT) system using regionally sourced wood, local labour, and on-reserve fabrication. Rather than importing finished buildings, the project focuses on building the capacity to produce housing within the community.

This approach reflects a broader shift—from externally delivered housing toward locally driven systems of production. While grounded in contemporary construction methods, it resonates with earlier practices in which housing was built from local materials, adapted to climate, and produced by the community itself.

The Timber House is therefore both a building and a framework: a model for how housing systems can support long-term resilience, economic development, and community agency.

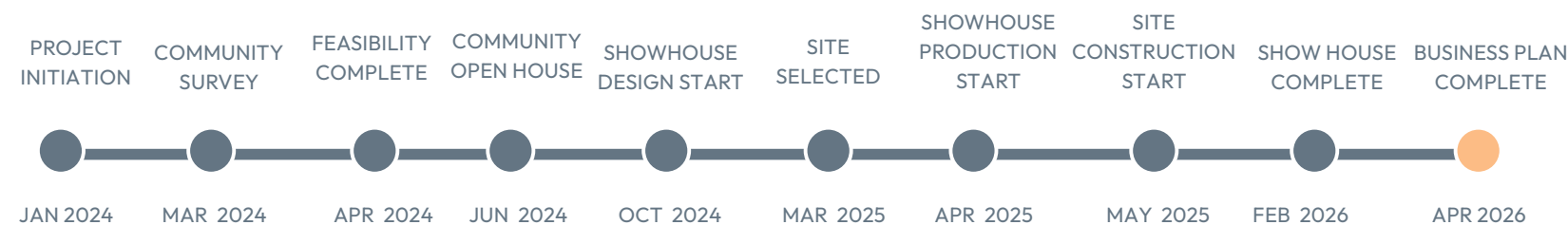


PROJECT OVERVIEW



The show house serves as a prototype within a broader effort to establish a Nak'azdli-Led housing production system

SHOWHOUSE TIMELINE



By fabricating panels locally, the project shifts value, knowledge, and control from external suppliers back into the community.

FROM FOREST TO FRAME



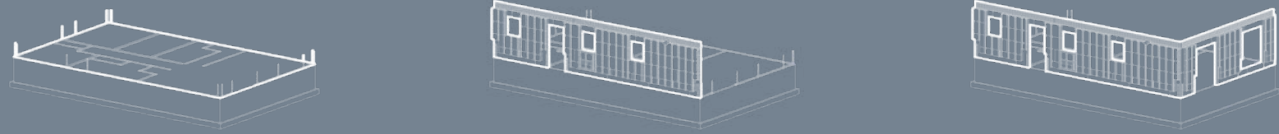
MAKING PANELS AT TL'OH

The showhouse uses Nail-Laminated Timber (NLT) panels, which are strong, simple, and suited to housing. These are built from dimensional lumber, nailed together into solid panels, then layered with plywood, air barrier, insulation, and strapping.

CONSTRUCTION SEQUENCE

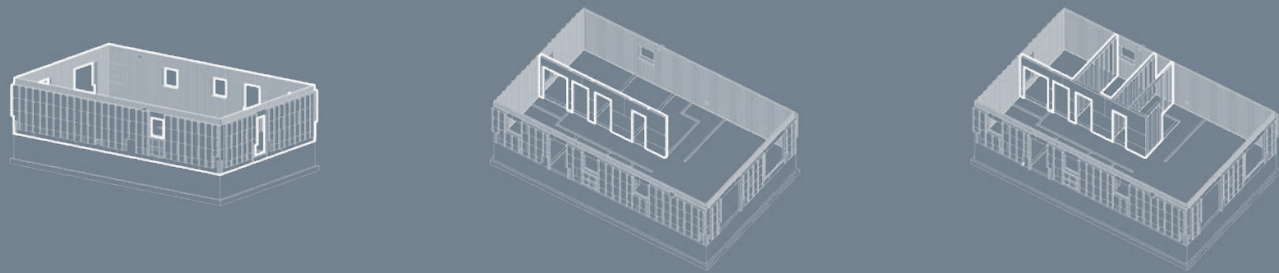
01-03

After foundation is formed, sill plates are positioned under walls, followed by perimeter level 1 wall panels



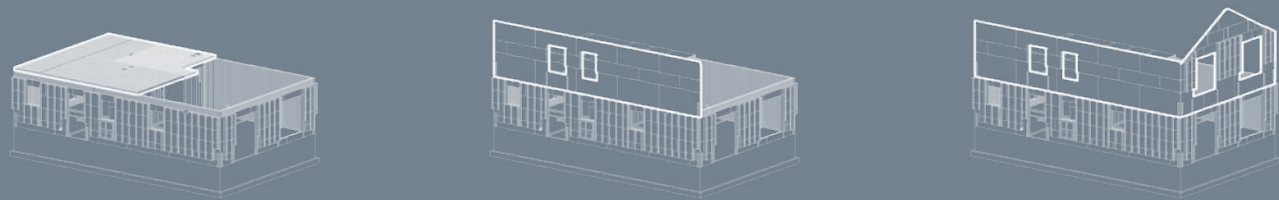
04-06

Once level 1 exterior walls are erected, level 1 structural interior wall panels are placed



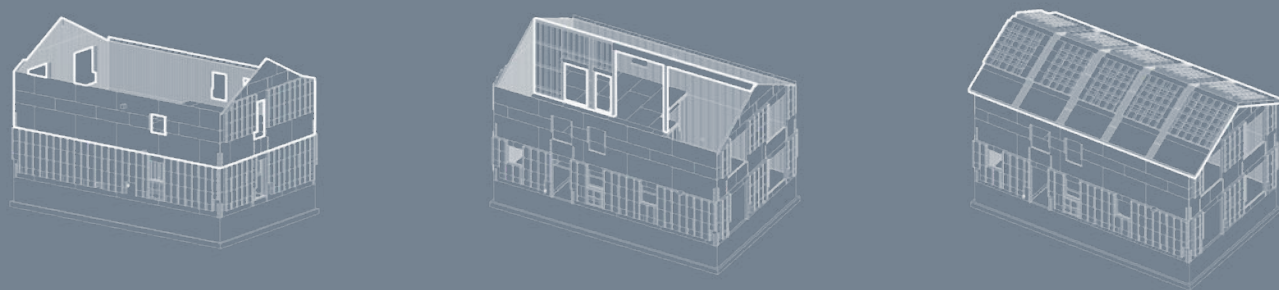
07-09

After all level 1 walls are in place, level 2 floor panels are positioned followed by level 2 perimeter wall panels



10-12

Once level 2 exterior wall panels are positioned, column and beam over loft space are positioned into place prior to installing roof panels into place



LOCALLY FABRICATED. RAPIDLY ASSEMBLED





A 7 Generation Housing Approach

The Timber House is conceived as long-life infrastructure—designed for durability, adaptability, and continued use across generations. Rather than short-term housing solutions, the project supports a model of building that considers long-term stewardship, maintenance, and intergenerational value.

A Housing System, Not a Single Project

The Timber House establishes a repeatable model for producing housing within the community, rather than relying on external delivery.

Local Production and Economic Development

Panels are fabricated on reserve using local labour and regional materials, supporting employment, training, and long-term capacity building.

Strengthening the Forestry Value Chain

From tree harvest to finished home, the project keeps value within the region and builds a foundation for future mass timber production.

Climate and Fire Resilience

Solid wood construction and high-performance assemblies provide durable, adaptable housing suited to northern climates and long-term environmental change.

A Platform for Future Housing Delivery

The system can be scaled and adapted for new housing in Nak'azdli and other communities, supporting long-term housing independence.

